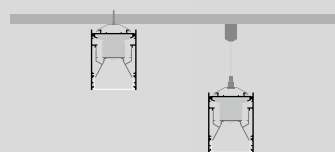


# MINO 60 CURVE

## ceiling / suspended system

[xal.com/mino](http://xal.com/mino)



### Quickinfo

#### GENERAL

surface, suspended  
IP 20

#### LED

Mid-power LED  
up to 2450lm/m  
up to 114lm/W  
3000 K, 4000 K  
CRI ≥ 80  
Binning initial ≤ 3 MacAdam

#### ESTIMATED LED LIFETIME

L80/50 000 h

#### OPTICAL

direct illumination  
PMMA cover opal  
microprismatic

#### ELECTRICAL

non DIM, DIM DALI  
transparent feeder cable

#### PHYSICAL

aluminium  
powder-coated  
halogen-free cable (internal wiring)

#### MINO 60

system  
surface / susp.

[page 508](#)

#### MINO 60

system direct/  
indirect susp.

[page 516](#)

### Description

**DE** Kreissegment aus gerolltem Aluminiumprofil, kantige Ausführung mit 55mm breitem Lichtaustritt, nahtlos verschweißt; keine sichtbaren Schrauben; ausgelegt für durchgehende Lichtsysteme; Oberfläche weiß, grau, dunkelgrau, schwarz, beige oder dunkelbraun pulverbeschichtet; Leuchtenprofil für Montage vorab lieferbar; restliche Leuchtenkomponenten werkzeuglos montierbar; Aufbau- bzw. Pendelleuchte mit 1500 mm Seilabhängung; werkzeuglose Höhenverstellung an der Leuchte; Befestigung an der Leuchte mittels Federclips; frei positionierbar; inkl. transparenter Einspeiseleitung; Lichteinsatz bestehend aus hochreflektierend lackiertem Strangpressprofil für verbessertes Thermomanagement; HPO (High Performance Opal) Abdeckung für homogene Ausleuchtung; mikroprismatische PMMA-Abdeckung inkl. Diffusorfolie zur Reduktion der Leuchtdichte bei homogener Ausleuchtung; energieeffiziente LEDs mit sehr guter Farbwiedergabe; Binning initial ≤ 3 MacAdam; lieferbar in den Lichtfarben 3000 K und 4000 K; CRI ≥ 80; min. 80 % des Lichtstromes nach 50 000 h Lebensdauer; Schutzart IP 20; SK I; wahlweise nicht dimmbar oder DALI-dimmbar

**EN** Circular segment of rolled aluminium profile, angular design with 55mm wide light emission, seamlessly welded; no visible screws; designed for continuous lighting systems; surface powder coated in white, grey, dark grey, black, beige or dark brown; luminaire profile for mounting available in advance; remaining luminaire components mounted without tools; surface mounted or suspended luminaire with 1500 mm cable suspension; with integrated tool-less suspension height adjustment; spring clip attachment to the luminaire; freely positionable; incl. transparent feed; lighting insert consisting of highly reflective coated extruded profile for improved thermal management; HPO (High Performance Opal) cover for uniform illumination; micro prismatic PMMA diffuser incl. diffuser film for homogeneous illumination and reduced luminance; energy-efficient LEDs with very good colour rendering; binning initial ≤ 3 MacAdam; available in the light colours 3000 K and 4000 K; CRI ≥ 80; min. 80 % of the luminous flux after 50 000 hours; protection class IP 20; PC I; optionally non-dimmable or DALI dimmable



### Standard configuration

<b>LED TYPE</b>	
e	4
e <sup>2</sup>	5

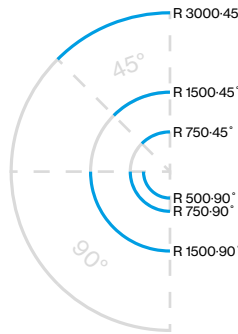
<b>COLOUR TEMPERATURE</b>	
3000K	5
4000K	6

<b>CONTROL</b>	
non DIM	1
DIM DALI (only e <sup>2</sup> )	3

<b>MATERIAL COLOUR</b>	
white	7



<b>LIGHT OPTIC COVER</b>	
opal high performance	H



### MINO 60 CURVE ceiling / suspended

order installation channel + mounting accessories separately



#### INSTALLATION CHANNEL + LIGHT INSET + LIGHT OPTIC COVER

SYSTEM POWER (e / e <sup>2</sup> )	R (mm)	ORDER CODE
13 / 17W	500-90°	0 3 4 - 0 9 0 5
10 / 13W	750-45°	0 3 4 - 0 9 0 0
18 / 27W	750-90°	0 3 4 - 0 9 0 1
18 / 27W	1500-45°	0 3 4 - 0 9 0 2
37 / 53W (2 DALI)	1500-90°	0 3 4 - 0 9 0 3
37 / 53W (2 DALI)	3000-45°	0 3 4 - 0 9 0 4

COVER	LED TYPE	COLOUR TEMP.	SYSTEM POWER	DELIVERED LUMENS	EFFICACY
opal cover	e	3000K	16W/m	1670lm/m	107lm/W
		4000K		1780lm/m	114lm/W
	e <sup>2</sup>	3000K	23W/m	2300lm/m	101lm/W
		4000K		2440lm/m	108lm/W
microprismatic cover	e	3000K	16W/m	1630lm/m	104lm/W
		4000K		1730lm/m	111lm/W
	e <sup>2</sup>	3000K	23W/m	2240lm/m	99lm/W
		4000K		2390lm/m	105lm/W

### Extended configuration

<b>MATERIAL COLOUR</b>	
beige*	K
grey	G
dark grey*	D
dark brown*	N
black	8

\*not available for power feeder



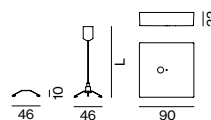
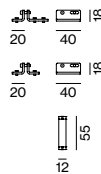
+5% surcharges

<b>LIGHT OPTIC COVER</b>	
microprismatic	Z

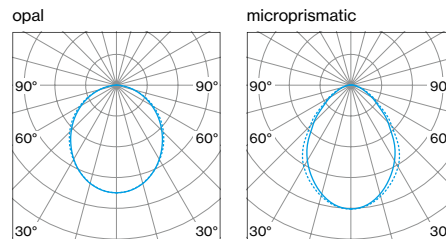


### Options on request

<b>LIGHT OPTIC COVER</b>	
microprismatic (UGR < 19)	



#### LIGHT DISTRIBUTION



### Accessories

#### END CAPS

<b>TYPE</b>	<b>ORDER CODE</b>
end caps (pair)	0 3 4 - 0 9 0 2 0 1

#### LINEAR CONNECTOR

<b>TYPE</b>	<b>ORDER CODE</b>
linear to curve profile	0 0 5 - 4 0 1 5 9
curve to curve profile	0 0 5 - 4 0 1 5 8
opal cover linear connector	0 0 6 - 1 4 0 0 0
microprismatic cover linear connector	0 0 6 - 1 6 0 0 0

#### CEILING CLIP / CABLE SUSPENSION / POWER FEEDER

<b>TYPE</b>	<b>L (mm)</b>	<b>ORDER CODE</b>
ceiling clip	10	0 3 4 - 1 1 6 3 6
cable suspension	1500	0 0 5 - 2 1 2 2 1 1 0
power feeder 3 × 1,5 mm <sup>2</sup> (non DIM)	1500	0 0 5 - 2 2 1 2 3 1
power feeder 5 × 1,5 mm <sup>2</sup> (DALI)	1500	0 0 5 - 2 2 1 2 4 1
cable rail	1200	0 0 5 - 2 4 9 1 1 1 0

#### THROUGH WIRE

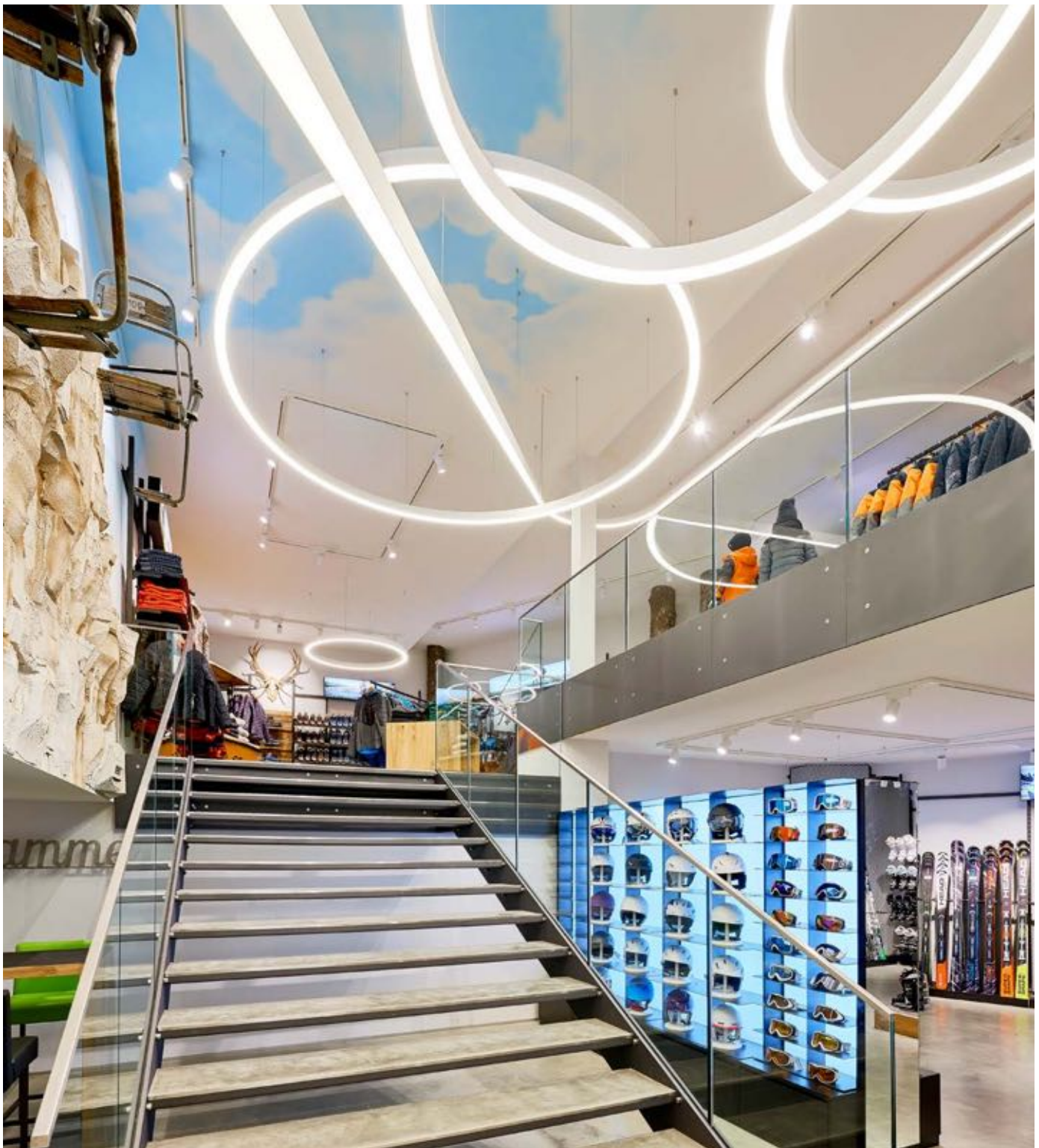
<b>TYPE</b>	<b>ORDER CODE</b>
3 × 1,5 mm <sup>2</sup> (non DIM, 10 pieces)	0 0 4 - 9 0 0 0 3
5 × 1,5 mm <sup>2</sup> (DIM DALI, 10 pieces)	0 0 4 - 9 0 0 0 5

## Inspiration

Sport + Fashion Store Schwinghammer  
Reisbach, Germany

**PRODUCT**  
MINO 60 CURVE suspended system

**ARCHITECT**  
Franz Heubl Dipl Ing (FH) BDIA  
Reisbach, Germany







## Inspiration

Microsoft Briefing Center  
Wallisellen, Switzerland

**PRODUCT**  
MINO 60 ceiling system

**ARCHITECT & INTERIOR DESIGN**

COASToffice architecture  
Stuttgart, Germany  
RBS Group  
Zurich, Switzerland

**LIGHTING DESIGN**

Schilli GmbH Licht-Consult  
Stuttgart, Germany

