



WEVER & DUCRÉ
LIGHTING

DEEP ADJUST petit 1.0 LED

153361Q3

Projekt

Typ

Notizen

Anzahl

Datum

ALLGEMEIN

Decke

Einbau

Bronze

IP20

Innen

560 lm

LED

2700 K

CRI 90

L80 / 50000 h

3-step binning

OPTISCH

Flood

Ausstrahlwinkel 34°

ABMESSUNGEN

Durchmesser 79 mm

Höhe 60 mm

0.05 kg

Standardfedern

Schwenkbar min 35°

Schwenkbar max 35°

Rotierbar 355°

ELEKTRISCH

Gesamt Leistung 7.9 W

LED Einsatz 5.9 W

0.3 m

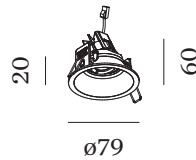
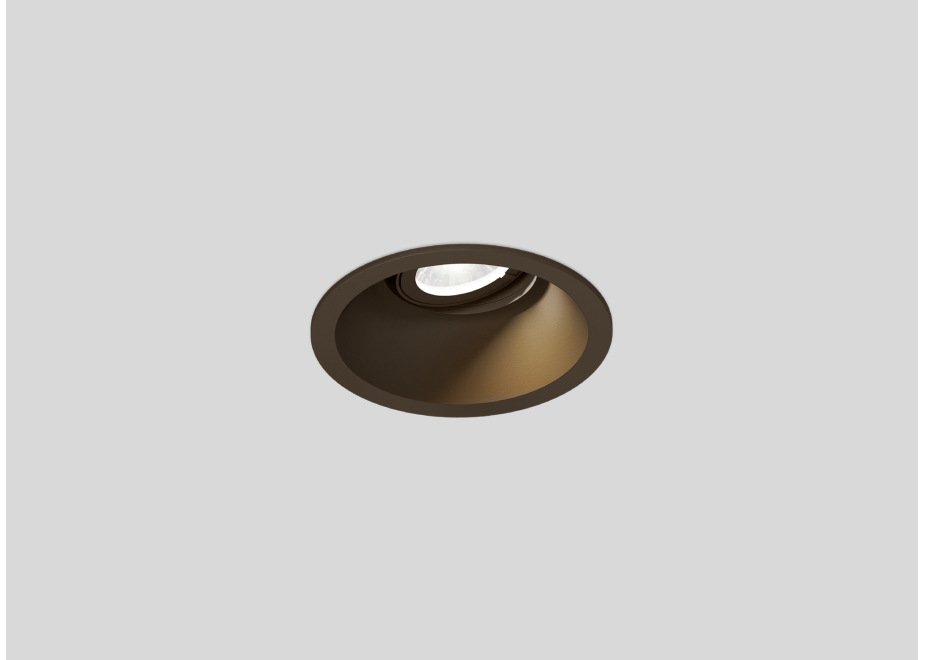
AUSSCHNITT

Durchmesser 68 mm

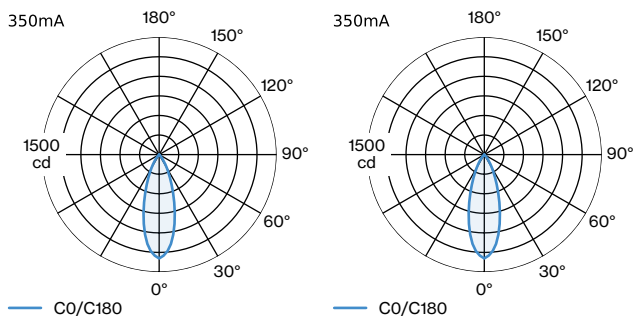
Min. Deckenstärke 4 mm

Max. Deckenstärke 25 mm

Einbautiefe 60 mm



LICHTVERTEILUNG





WEVER & DUCRÉ
LIGHTING

DEEP ADJUST petit 1.0 LED

153361Q3

KEGELDIAGRAMM

flood 34° 350mA			flood 34° 350mA		
h (m)	EO° (lx)	ø (m)	h (m)	EO° (lx)	ø (m)
1	1326	0.61	1	1326	0.61
2	332	1.23	2	332	1.23
3	147	1.84	3	147	1.84
4	82	2.46	4	82	2.46
5	53	3.07	5	53	3.07

ELEKTRISCH

Netzgerät

TYP	L · B · H (MM)	SPANNUNG	ORDERCODE
Driver 6W 350mA 3-22V	64·35·21	3 - 22V	9 0 2 1 3 2 0 2
Driver 30W 350mA 43-86V	127·43·30	43 - 86V	9 0 2 1 3 7 0 1
Driver 17.5-20W 350mA 25-50V 500mA 20-40V 700mA 14-28,5V	101.5·51·29.5	20 - 40V 25 - 50V	9 0 2 1 8 6 0 1
Driver 10W 350mA 14-28V	101.5·51·29.5	14 - 28V	9 0 2 2 3 4 0 1
Driver 10W 350mA 12-28V	102·38·21	12 - 28V	9 0 2 2 3 4 0 2

Netzgerät 350mA

TYP	L · B · H (MM)	SPANNUNG	ORDERCODE
Treiber 15W 21-42V	101.5·51·29.5	21 - 42V	9 0 2 2 3 5 0 3
Treiber 10W 2.5-26V	124·31·21	2.5 - 26V	9 0 2 4 3 4 0 1
18W 8-50V touch dim DALI 1-100%	119·53·30	8 - 50V	9 0 2 5 3 6 0 1