

# XAL SQUADRO 1 × 4 lamps wallwasher

049-2231517S

PROJECT \_\_\_\_\_

TYPE \_\_\_\_\_

NOTES \_\_\_\_\_

QUANTITY \_\_\_\_\_

DATE \_\_\_\_\_

## GENERAL

6190 lm

## LED

3000 K

CRI ≥ 80

L80 / 50000 h

## PHYSICAL

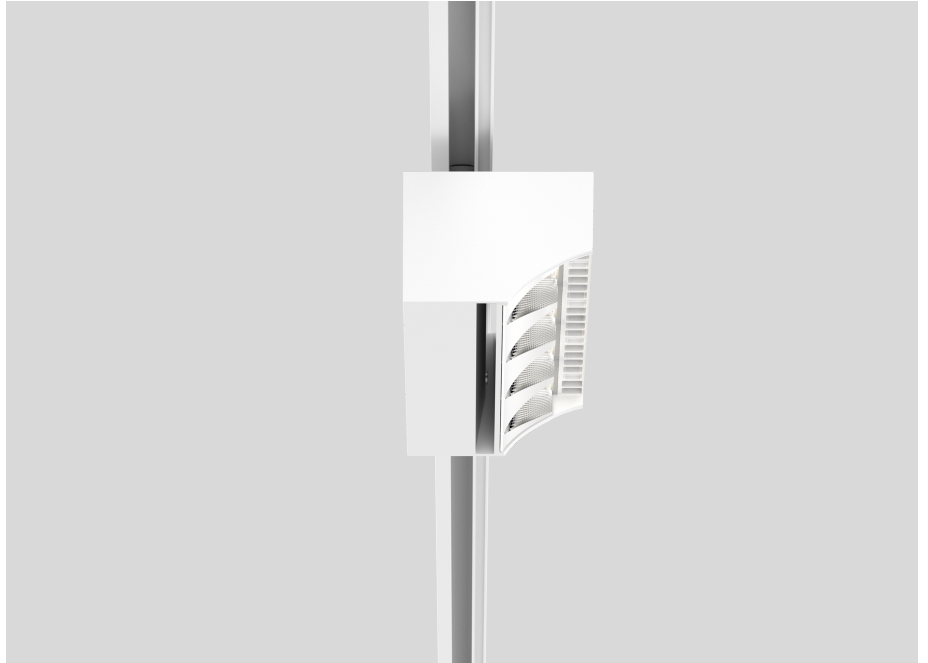
1.4 kg

## ELECTRICAL

51 W

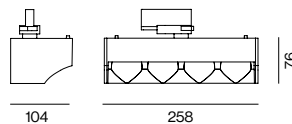
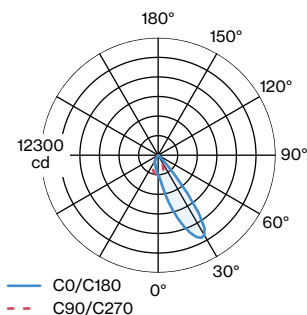
121 lm/W

PC1 220-240V



Tracked spotlight in die cast aluminium with 4-lamp design; surface white powder coated; converter integrated into spotlight head; heat sink integrated into luminaire geometry for optimum thermal management and passive cooling of LEDs; with COB (Chip on Board) technology for maximum efficiency; light colour 3000 K; Binning initial ≤ 3 MacAdam; CRI ≥ 80; min. 80% of luminous flux after 50000 operating hours; energy efficient LEDs with high CRI; aisle spotlight shelf floor washer with special, multi-free-form, facet effect surface reflectors for high precision light control; precise shelf and aisle zone lighting, optimum longitudinal glare control for high viewing comfort in the aisle zone; adjustable light module (tiltable +15° to -15°); degree of protection IP20; IP 40 protection glass available as an accessory; accessories are listed separately; PC1 220-240V; incl. converter, non dimmable; adapter for toolless insertion or movement on a variety of 3-phase power tracks;

## Light Distribution





# SQUADRO 1 × 4 lamps wallwasher

049-2231517S

## Circuit Breaker Types

Automatic Circuit Breaker Type	Number of Fixtures
B10	5
B13	7
B16	10
B20	12
C10	10
C13	15
C16	20
C20	24

## Other

### IP40 PROTECTION GLASS

#### TYPE

4 lamps / single-sided output

#### ORDERCODE

049-2930010